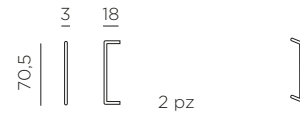


# SIPARIO CHIUSURA






design Raffaello Galiotto



## Ref. 383



1 KIT = 2 pz

-  1 peso prodotto in kg  
weight of product in kg
-  1 0,006m<sup>3</sup> imballo cartonato - pz e volume in m<sup>3</sup>  
carton packing - pcs and volume in cbm
-  180 pz pz su pallet  
pcs on pallet
-  prodotto da montare  
assembly required
-  prodotto testato a norma da Catas  
product tested by Catas

**IT** Chiusura per divisorio modulare autoportante da esterno configurabile a piacere, ideale per dividere gli spazi all'aperto. Materiale: polipropilene fiberglass rigenerato trattato anti-UV e colorato in massa. Il polipropilene fiberglass rigenerato può subire delle piccole variazioni di colore dovute all'utilizzo di materiale riciclato. Finitura opaca. Resina riciclabile.

**EN** End element for a free-standing modular partition for outdoor use, which can be configured as required. Ideal for separating outdoor spaces. Material: regenerated uniformly colored fiberglass polypropylene resins with UV additives. Regenerated fiberglass polypropylene may undergo small variations in color due to the use of recycled material. Matt finish. Recyclable resin.

**FR** Élément de fermeture pour cloison extérieure modulaire autoportante pouvant être configurée comme bon vous semble et parfaite pour diviser les espaces en extérieur. Matériau: polypropylène fiberglass régénérée traité anti-UV et coloré dans la masse. Polypropylène fiberglass régénérée peut subir de légères variations de couleur en raison de l'utilisation de matériaux recyclés. Effet mat. Résine recyclable.

**DE** Abschlusselement für beliebig zusammenstellbare, freistehende, modulare Trennwand für den Außenbereich, ideal zum Unterteilen von Räumen im Freien. Material: regeneriertem UV-beständigem fiberglass-Polypropylen, voll durchgefärbt. Regeneriertem fiberglass-Polypropylen kann aufgrund der Verwendung von recyceltem Material kleinen Farbabweichungen unterliegen. Matt-Effekt. Recyclebarer Kunststoff.

**ES** Elemento de cierre para panel modular autoportante de exterior, configurable a placer, ideal para dividir espacios al aire libre. Material: polipropileno fiberglass regenerado tratado anti-UV y teñido en masa. El polipropileno fiberglass regenerado puede sufrir pequeñas variaciones de color debido al uso de material reciclado. Efecto mate. Resina reciclable.

**PT** Elemento de fecho para divisória modular autoportante para ambientes exteriores, configurável à vontade, ideal para dividir os espaços ao ar livre. Material: polipropileno fiberglass regenerado com tratamento anti-UV colorido na totalidade. O polipropileno fiberglass regenerado pode sofrer pequenas variações de cor devido ao uso de material reciclado. Acabamento fosco. Resina reciclável.



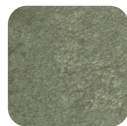
TERRA

40383.44.000



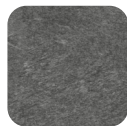
GESSO

40383.29.000



CACTUS

40383.27.000



BASALTO

40383.25.000

Il polipropilene fiberglass rigenerato può presentare delle variazioni di colore dovute all'utilizzo di materiale riciclato. - Regenerated fiberglass polypropylene may vary in color due to the use of recycled material. - Polypropylène fiberglass régénérée peut présenter variations de couleur en raison de l'utilisation de matériaux recyclés. - Regeneriertem fiberglass-Polypropylen kann aufgrund der Verwendung von recyceltem Material Farbabweichungen aufweisen. - El polipropileno fiberglass regenerado puede presentar variaciones de color debido al uso de material reciclado. - O polipropileno fiberglass regenerado pode apresentar variações de cor devido ao uso de material reciclado.